

Specification

LG UltraWide™ Monitor

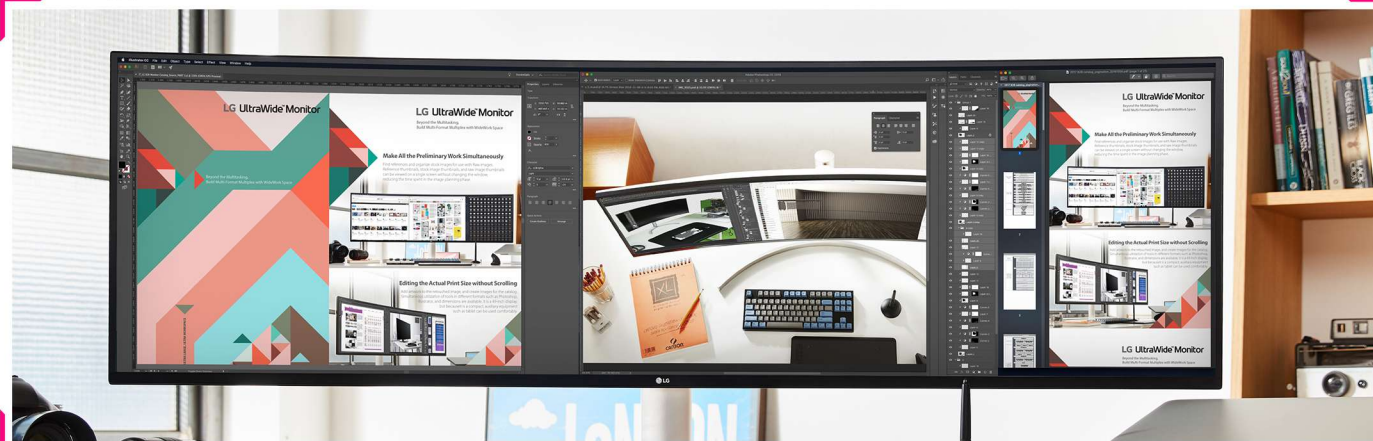
Category	UltraWide™ Monitor		
	WL95C	WL85C	WL850
Model			
Screen Size	49"	34"	34"
Resolution	UltraWide™ Dual QHD (5120x1440)	UltraWide™ QHD (3440x1440)	UltraWide™ QHD (3440x1440)
Display	Curved IPS Display 3-Side Virtually Borderless Design	Curved IPS Display 3-Side Virtually Borderless Design	Nano IPS Display 3-Side Virtually Borderless Design
Brightness (Typ.)	350nits	300nits	400nits
Color Gamut (Typ.)	sRGB 99%	sRGB 99%	DCI-P3 98%
HDR	HDR 10	HDR 10	VESA DisplayHDR™ 400
Viewing Angle (Ver./Hor.)	178 / 178	178 / 178	178 / 178
Response Time	5ms (GtG at Faster)	5ms (GtG at Faster)	5ms (GtG at Faster)
Speaker	Rich Bass (10W x 2ch)	MAXXAUDIO® (7W x2ch)	MAXXAUDIO® (7W x2ch)
Interface	USB Type-C™(with 85W Laptop Charging) x1, Display Port x1, HDMI x2, USB 3.0 4dn	Display Port x1, HDMI x2, USB 2.0 1up / USB 3.0 2dn	Thunderbolt™ 3(with 60W Laptop Charging) x1, Display Port x1, HDMI x2, USB 3.0 2dn
Power	Built-in Power	External Power(Adapter)	External Power(Adapter)
Stand	Tilt (-5°~15°), Height (110mm), Swivel (-15°~15°)	Tilt (-5°~15°), Height (110mm)	Tilt (-5°~15°), Height (110mm)
Ambient Light Sensor	O	X	O
OnScreen Control (SW)	O	O	O
Dual Controller (SW)	O	O	O



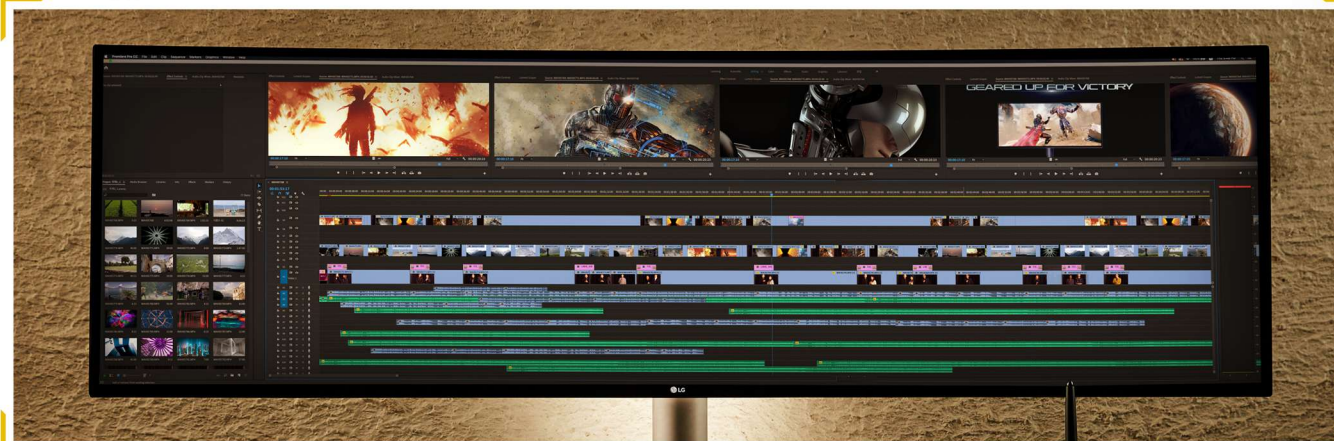
2019
LG UltraWide™ Monitor
49WL95C | 34WL85C | 34WL850



Visual Content



Motion Content



Sound Content

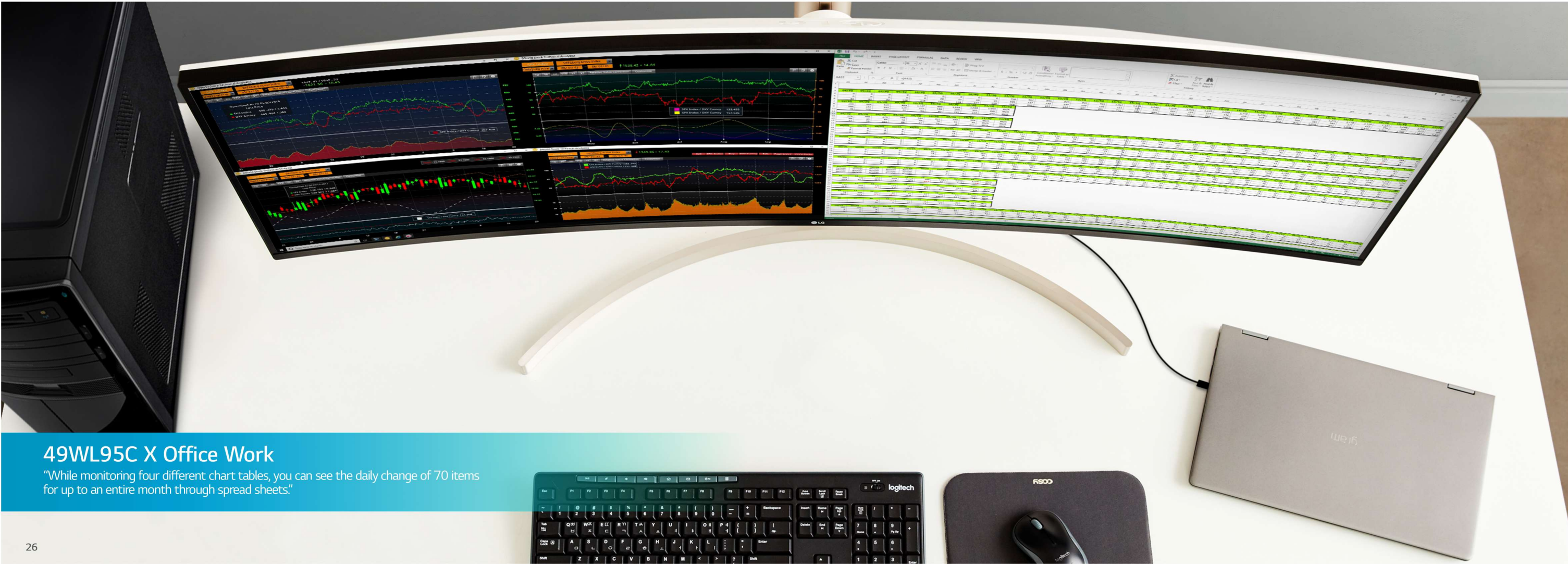


Office Work



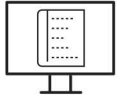
49WL95C

- 49" 32:9 UltraWide™ Dual QHD (5120x1440) IPS Display
- sRGB 99% (Typ.) Color Gamut, 350nits (Typ.) Brightness
- HDR 10 Support
- 3-Side Virtually Borderless Design
- USB Type-C™ with 4K AV, Data transferring, Power Delivery (~85W)
- HDMI x2, Display Port x1, USB 3.0 x4 Down
- 10W Built-in Stereo Speaker with Rich Bass
- OnScreen Control (SW), Dual Controller (SW)
- Ambient Light Sensor
- Tilt (-5°~15°), Height (110mm), Swivel (-15~15°) Adjustable Stand
- Wall Mountable(100 x 100)
- One Click Stand / Edge-ArcLine Stand Design



49WL95C X Office Work

"While monitoring four different chart tables, you can see the daily change of 70 items for up to an entire month through spread sheets."

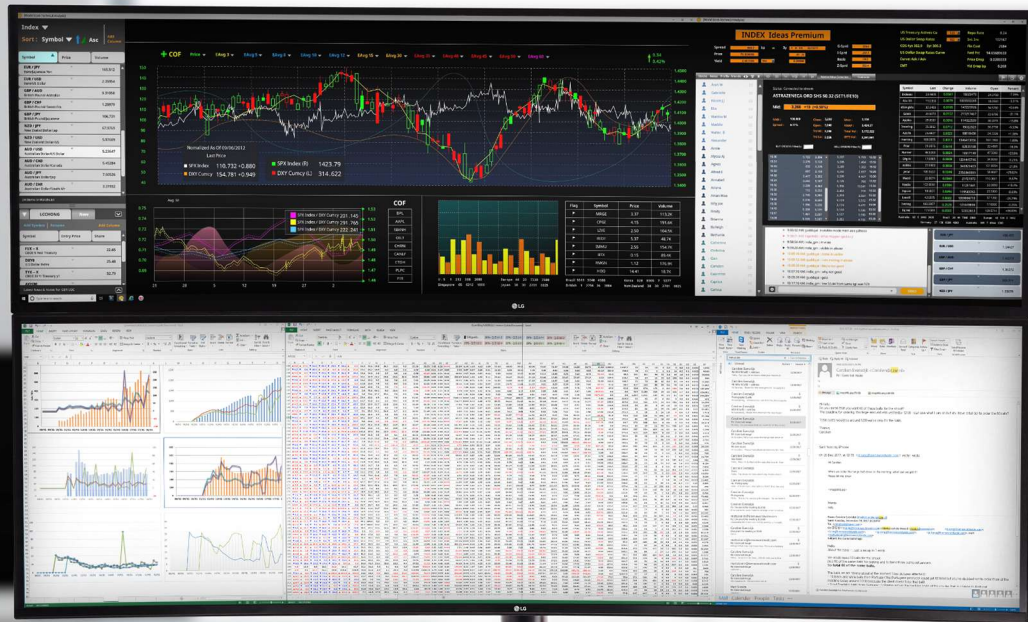


Phase of Work

- Data Analysis Phase
Wall Mountable
- Report Phase
Dual Controller

Reduce Physical Space and Expand Workspace

The 49WL95C offers a VESA hole for wall mounting, which allows a vertically stacked setup. It provides more work space in less physical space. Therefore, it can be an enhanced option when a multi-monitor setup is needed, such as in a trading room.



*Stands and brackets for vertical mounting are not included in the package and must be purchased separately.

Control All Devices Through the Space Optimization App

In a business environment where multiple displays and multiple PCs are required, a respective number of input devices assigned to the displays and PCs are required. But with the Dual Controller; you can control multiple devices connected to multiple displays and more easily manage a wider screen space.



*Stands and brackets for vertical mounting are not included in the package and must be purchased separately.

49-INCH, 32:9 UltraWide

49"



49-inch, 32:9 UltraWide™

The 49WL95C is a 32:9 UltraWide™ Dual QHD Monitor that offers a longer, wider workspace than a 21:9 QHD, enabling a multi-format multiplex rather than multitasking.

49-inch Class, Packed in Sleek Design

49WL95C provides a 49-inch class workspace in sleek design.

With the ultimate workspace on flexible workstation, you can boost your productivity to the limit.

WIDE BUT SLEEK DESIGN

49"



3-Side Virtually Borderless Design

3-Side Virtually Borderless Design delivers unparalleled immersive viewing experience with a narrow bezel in 3-side of display.



Height
(110mm)

Tilt
(-5°~15°)



Swivel
(-15°~15)

Ergonomic Design

49WL95C provides convenient height / tilt / swivel adjustment. You can customize the display condition to create a more personal, comfortable workstation.



Phase of Work

Screening Phase

5120 x 1440 Resolution, 108 PPI

Retouching Phase

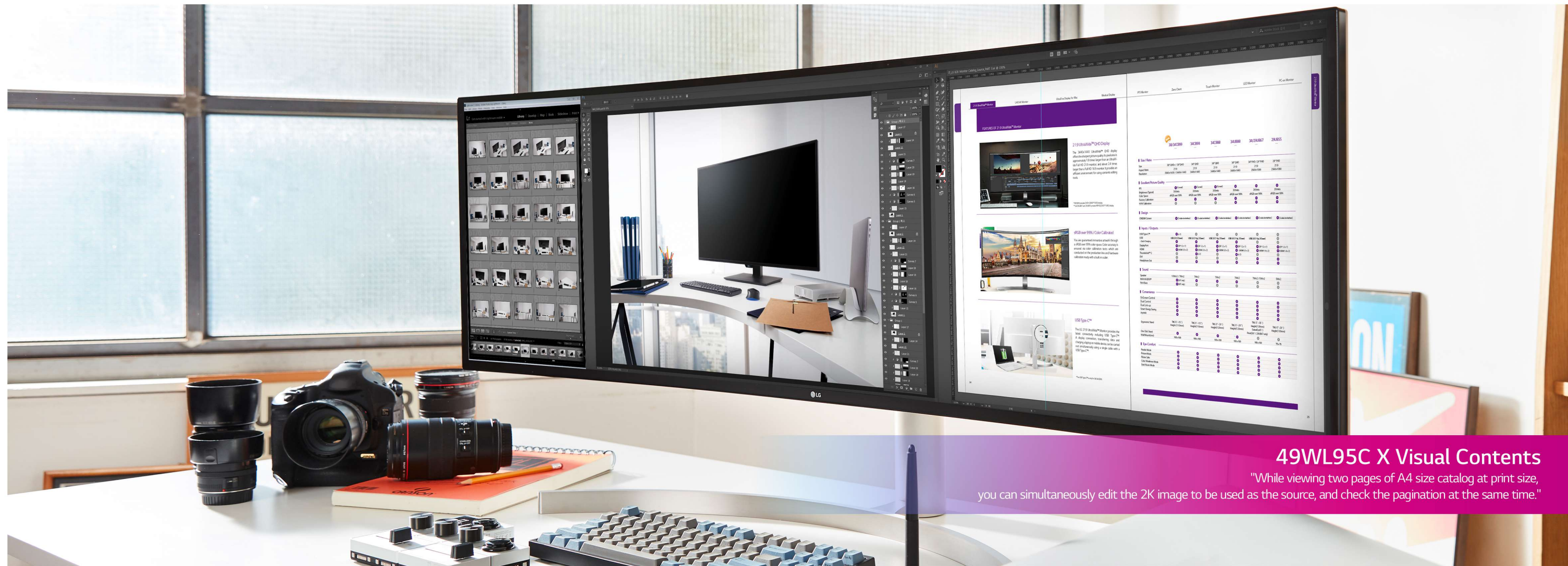
sRGB 99% & HDR 10

Source Image Producing Phase

Simple & Ergonomic Design

Editing Phase

USB Type-C™



49WL95C X Visual Contents

"While viewing two pages of A4 size catalog at print size, you can simultaneously edit the 2K image to be used as the source, and check the pagination at the same time."

Do All the Preliminary Work Simultaneously

The 49WL95C provides the same working area as two QHD monitors. Reference thumbnails, stock image thumbnails, and raw image thumbnails can be viewed on a single screen without changing the current window.



Simultaneous Raw Image Toning and Detail Retouching

The 49WL95C supports a wide color spectrum of 99% of sRGB for image toning and retouching. Supporting HDR 10, a digital HDR standard, contributes to the production of HDR images for digital use.



Beyond Multitasking, Multi-Format Multiplex

Add artwork to a retouched image and create images for a catalog, tools for different formats can be used simultaneously. The 49WL95C packed with 49-inch class workspace in a sleek design provides more flexible space usability. This makes it possible to comfortably use additional devices, such as tablets.



Simply Configure Your Workstation

While viewing the pagination PDF and editing the A4 catalog as the print size, you can modify the images at the same time. The 49WL95C supports USB Type-C™, so even if your workstation is a laptop, you can do all of these things without wire clutter.



34WL85C

- 34" Curved UltraWide™ QHD (3440x1440) IPS Display
- 3-Side Virtually Borderless Design
- HDR10
- sRGB 99% (Typ.) Color Gamut, 300nits (Typ.) Brightness
- Color Calibrated
- Display Port x1, HDMI x2, USB 2.0 1up / USB 3.0 2dn, H/P out
- MAXXAUDIO®, 7Wx2 Stereo Speakers
- PBP / Dual Controller (SW) / OnScreen Control (SW)
- Tilt(-5~15°), Height(110mm) Adjustable Stand
- Wall Mount(100X100)
- One Click Stand / Edge-ArcLine Stand Design



34WL85C

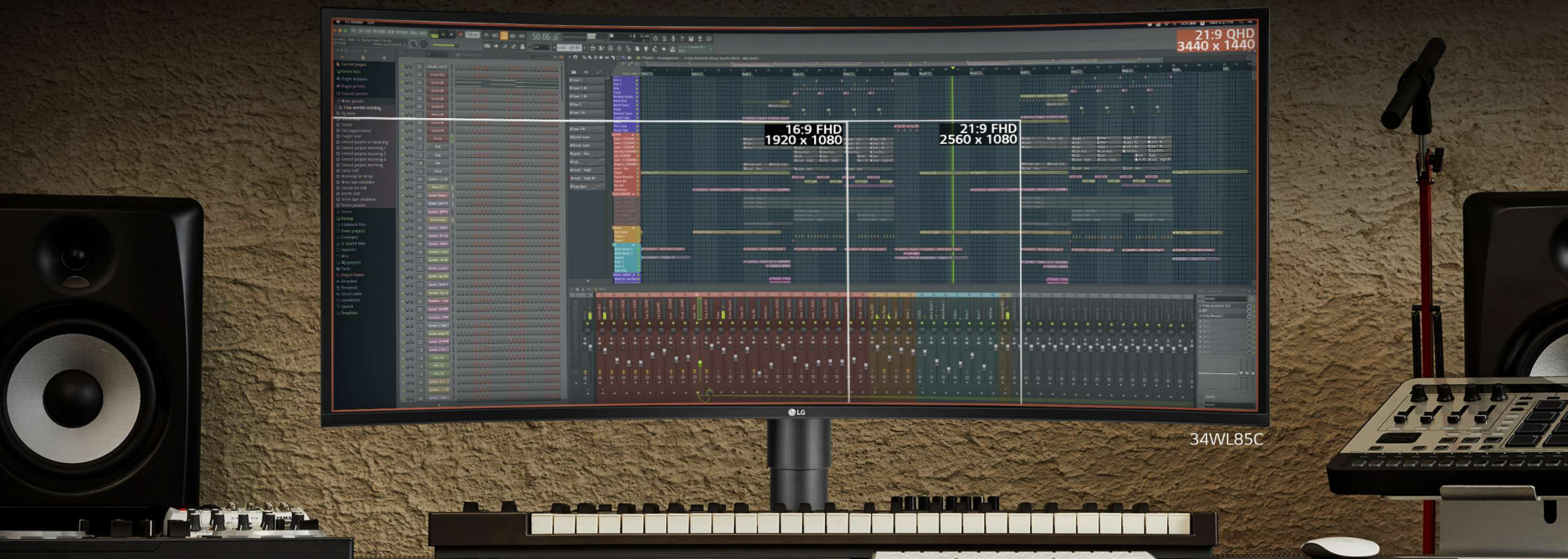
34WL850

34WL850

- 34" UltraWide™ QHD (3440x1440) Nano IPS Display
- 3-Side Virtually Borderless Design
- HDR10 / VESA DisplayHDR™ 400
- DCI-P3 98% (Typ.) Color Gamut, 400nits (Typ.) Brightness
- Color Calibrated / HW Calibration / True Color Pro (SW)
- Thunderbolt™ 3 x1, Display Port x1, HDMI x2, USB 3.0 2dn, H/P out
- Thunderbolt™ 3 with Data transferring, Power Delivery (~60W)
- MAXXAUDIO®, 7Wx2 Stereo Speakers
- Ambient Light Sensor
- PBP / Dual Controller (SW) / OnScreen Control (SW)
- Tilt(-5~15°), Height(110mm) Adjustable Stand
- Wall Mount(100X100)
- One Click Stand / Edge-ArcLine Stand Design

Immersive Screen Space that Can Manage All Windows Simultaneously

The 34-inch 21:9 UltraWide™ monitor with QHD, which has 2.4 times more workspace compared to a 16:9 FHD monitor, allows the user to run various programs simultaneously without enlarging or reducing the screen.



A New Generation of Color Performance Remains Stable for a Long Time

The 34WL850, which consists of Nano IPS Panel, provides a wide color spectrum of 98% DCI-P3. DCI-P3 98% allows the original colors to be accurately reproduced so each scene features precise color expression. And it also supports VESA DisplayHDR™400, enables dramatic visual immersion with true 10Bit(8bit + FRC) image quality and a wide color gamut and contrast.



*Applied only to 34WL850.

A New Generation of Color Performance Remains Stable for a Long Time

34WL850 supports Hardware Calibration & True Color Pro software maintain accurate color on the screen and prevent gradual changes. With Hardware Calibration through True Color Pro software, you can enjoy both the color performance and impeccable consistency.

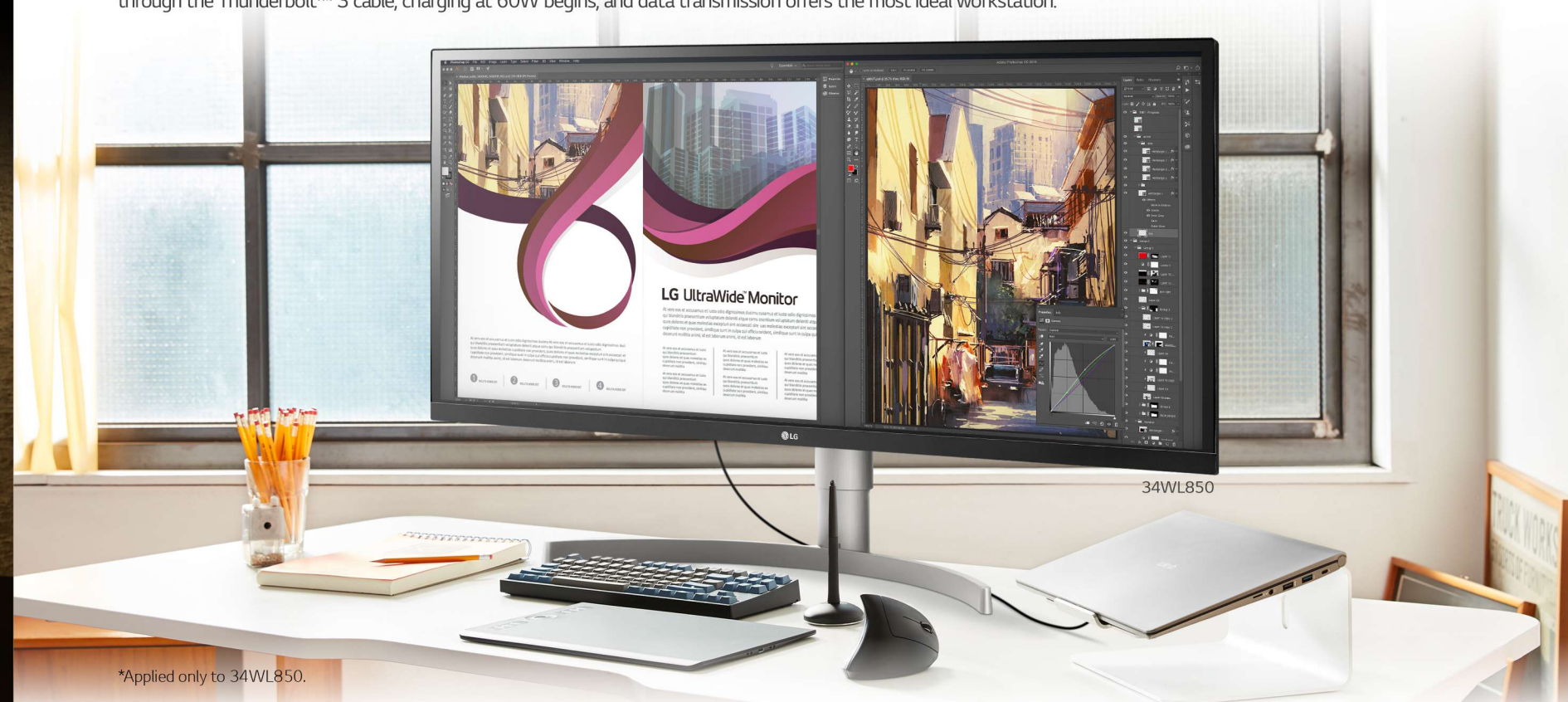


34WL850

*Applied only to 34WL850.
**Hardware Calibrator is optional.

A New Generation of Workspace Managed Simply and Efficiently

With Thunderbolt™ 3, the UltraWide™ can provide greater productivity and efficiency. Once a laptop is connected to the monitor through the Thunderbolt™ 3 cable, charging at 60W begins, and data transmission offers the most ideal workstation.



34WL850

*Applied only to 34WL850.

A New Generation of Workspace Managed Simply and Efficiently

The 34WL85C and 34WL850 support 7W built-in stereo speaker. Equipped with MAXXAUDIO®, this speaker delivers massive bass that can boost the quality of your creative work. As a result, space utilization can be improved while maximizing work efficiency.



Space Configuration that Goes Beyond Creativity and Entertainment

OnScreen Control allows you adjust customize all the display options with a few clicks and also offers controlling multi-monitor and displays. And with a Dual Controller, if you use two or more PCs or laptops, you can control them all with just one keyboard mouse, just like using one PC.

