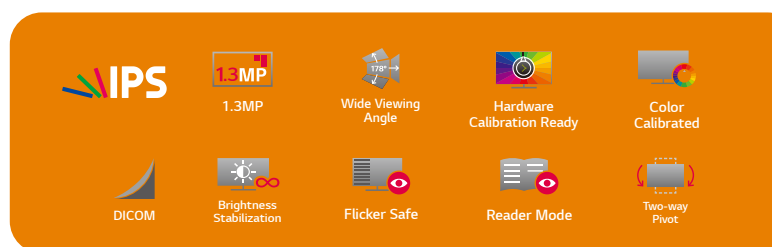


# LG 1.3MP Clinical Review Monitor



19HK312C

## Stable, Optimized Image Quality

### 1.3MP<sup>1</sup> IPS Display & 330nits(Typ.) with NTSC 72%

The 19-inch 1.3MP IPS display offers optimized picture quality without any color shift. With NTSC 72% & 330nits(Typ.) brightness, it is a suitable for X-ray images with a 3:4 ratio by pivoting and delivers vivid, clear image reproduction for precise clinical review.

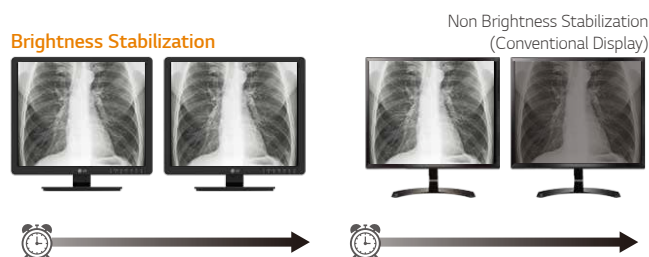


\*1.3MP(Mega Pixel): 1280 x 1020

## Guaranteed for Reliable Clinical Reviewing

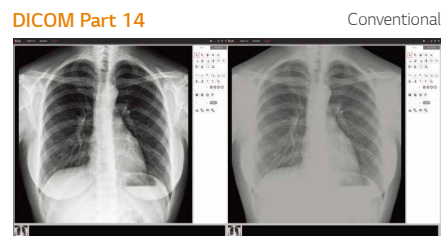
### Brightness Stabilization

A sensor measures the backlight brightness stability and automatically compensates for brightness fluctuations caused by aging for a consistently stable display during the usage life.



### DICOM<sup>1</sup> Part 14

To ensure the most accurate, consistent shading possible for medical images, the LG clinical review monitor measures and sets every grayscale tone on the production line to produce a monitor compliant with DICOM Part 14.



\*DICOM: Digital Imaging and Communications in Medicine.

## Enhanced Viewing Comfort

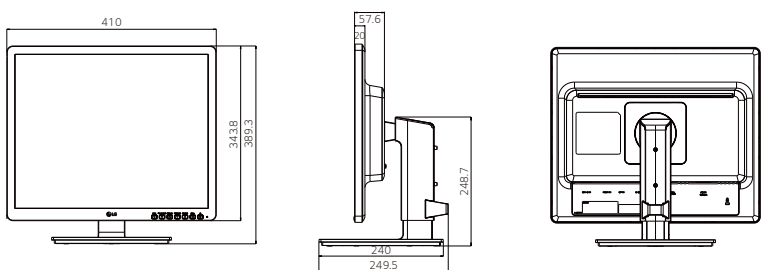
### Flicker Safe & Reader Mode

Flicker Safe reduces the onscreen flicker level to almost zero, which helps minimize eye strain and visual fatigue. Plus, Reader Mode reduces blue light emissions that can be harmful to the eyes, so doctors can comfortably view the clinical review monitor.

### Ergonomic Stand with Two-Way Pivot

Bi-directional pivot provides a customizable multi-monitor configuration according to the user's needs based on diagnostic software, and the lower cover between the two monitors does not interfere with on-screen contents as it pivots in different directions.

## Specification

Model Name		19HK312C
External Dimension		
Panel	Type	IPS
	Size	19" (5:4)
	Native Resolution	1280 x 1024
	Pixel Pitch	0.294 mm x 0.294 mm
	Display Colors	8bit / NTSC 72%
	Viewing Angles	178/178
	Brightness	330cd/m <sup>2</sup> (Typ.)
	Surface Treatment	Anti-Glare 3H
	Contrast Ratio	900:1 (Typ.)
Response Time	14ms (Typ.)	
Video Signals	Input Terminals	D-sub x 1, DVI-D x 1, HDMI(1.4) x 1, DP(2.0) x 1
	Digital Scanning Frequency (H/V)	30~83 kHz / 56~75 Hz
	Sync Formats	Dynamic Sync Mode (Thru Mode)
USB	Function	1 upstream, 2 downstream
	Standard	USB 3.0
Power	Power Requirements	100-240Vac, 50/60Hz
	Maximum Power Consumption	50W
	Power Save Mode	0.5W
	Power Management	0.5W
Brightness Stabilization		Support
Certifications & Standards		IEC(IEC60601-1 / IEC60601-1-2), FCC(FCC part 15 Class A), ANSI/AAMI ES 60601-1, CSA CAN/CSA-C22.2 NO. 60601-1, CB, RoHS, REACH, WEEE, CISPR, EN, ANSI, AAMI, CE MDD(Class 1)
Supplied Accessories		Power Cord, D-sub Cable, DVI-D Cable, HDMI Cable, DP Cable, USB Cable, CD/Book Manual
Physical Specifications	Weight(Without Stand)	2.9kg
	Weight(With Stand)	5.1kg

**LG Electronics Inc.**

<http://www.lge.com>

Copyright © 2018 LG Electronics. All Rights Reserved.